

654321

NOTES: (UNLESS OTHERWISE SPECIFIED)

1. BOARD FABRICATION METHODS MUST COMPLY WITH:
[] QORVO PCB FABRICATION SPECIFICATIONS PCB-21-101.
A COPY OF PCB-21-101 CAN BE OBTAINED FROM QORVO UPON REQUEST.
[x] FABRICATE IN ACCORDANCE WITH IPC-6018B, per IPC-6011, CLASS 3.

2. ARTWORK FORMAT: [x] GERBER 274X*
[] GERBER X2*
[] ODB++
*GERBER DATA SUPPLIED WITH DESIRED FINAL TRACE WIDTHS. PROCESS
COMPENSATION TRACE WIDTH ADJUSTMENTS TO BE DONE BY PCB FABRICATOR.

3. MATERIAL:
NUMBER OF LAYERS: [x] 2 LAYERS [] 4 LAYERS
METAL 1: [x] 0.5oz. [] 1.0oz. [] 1.5oz. [] 2.0oz.
CORE 1: [x] ROGERS 4003C, 0.008in. THICK
[] ROGERS 4350B, 0.020in. THICK
[] FR4, 0.010in. THICK
METAL 2: [x] 0.5oz. [] 1.0oz. [] 1.5oz. [] 2.0oz.
PREPREG 1: [] EPOXY COATED GLAS FABRIC.
METAL 3: [] 0.5oz. [] 1.0oz. [] 1.5oz. [] 2.0oz.
CORE 2: [] FR4, .020in. THICK
METAL 4: [] 0.5oz. [] 1.0oz. [] 1.5oz. [] 2.0oz.
SOLDERMASK TOP: [x] LPI (LIQUID PHOTO-IMAGEABLE), [x] GREEN [] BLACK [] BLUE.
OR LDI (LASED DIRECT IMAGEABLE), [x] GREEN [] BLACK [] BLUE.
MAX FINISH THICKNESS OF SOLDERMASK TO BE 0.001in.
SILKSCREEN TOP: HIGH TEMPERATURE, NON-CONDUCTIVE, WHITE EPOXY BASED INK.

4. FINISH PLATING:
METAL 1 AND METAL 2:
[x] ENIG (ELECTROLESS NICKEL/IMMERSION GOLD):
NICKEL PLATE per QQ-N-290, CLASS 1, GRADE G, 200µin. (5µm) MIN.
GOLD PLATE per ASTM B 488, TYPE III, CODE A, 3-10µin. (0.08-0.25µm)
[] IMMERSION SILVER per IPC-4553A, (6-18µin.)
[] HASL (HOT AIR SOLDER LEVEL)
[] OSP (ORGANIC SOLDER PERSERVITIVE)
METAL 1 SELECTIVE GOLD PLATING:
PLATING MUST BE FREE FROM CONTAMINATION, STAINS AND DEBRIS.
[] GOLD PLATE per ASTM B 488, TYPE III, CODE A, CLASS 1, 50µin. (1.27µm)

5. FINISHED BOARD THICKNESS: 0.011 ±0.003in.

6. COPPER IS PULLED BACK 0.002in. FROM EDGE OF BOARD ON METAL 1 AND METAL 2.
AND PULLED BACK 0.003-0.005in. FROM EDGE OF BOARD ON INTERNAL LAYERS.
THESE VALUES ARE CRITICAL AND MUST BE INSPECTED.

7. TOLERANCE: PC BOARD OUTLINE: ±0.002in.

8. BURRS SHALL NOT EXCEED 0.002in.

9. VIA PLATING/FILLING:
A. ALL VIAS UNDER THE DUT ARE TO BE:
[x] COPPER-FILLED, OVER-PLATED AND PLANARIZED.
FINISHED COPPER THICKNESS TO BE 0.0014 ±0.0004in.
[] EPOXY-FILLED, (CB100) CONDUCTIVE EPOXY, PLANARIZED.
[] EPOXY-FILLED, SAN-EI KAGAKU PHP-960 NON-CONDUCTIVE EPOXY, PLANARIZED.
B. ALL OTHER PLATED THRU HOLES TO BE PLATED TO 0.0007in. MIN. THICKNESS.
C. VIA TYPES AND LAYER ASSOCIATION USED ON BOARD:
[x] THRU-HOLE VIAS: LAYER: 1-2
[] BLIND VIAS: LAYER: X-X, X-X
[] BURIED VIAS: LAYER: X-X, X-X

10. METAL 1 TOP AND METAL2 BOTTOM SHALL BE PLANARIZED AFTER PLATING HOLES SHUT.
MAX ALLOWABLE NEGATIVE FEATURE 0.0008in. MAX ALLOWABLE POSITIVE FEATURE 0.0003in.

11. CONDUCTOR WIDTHS AND SPACING TO BE WITHIN 0.001in. OF CAD DATABASE.

12. SOLDERMASK IN PLATED-THRU HOLES IS ACCEPTABLE AS LONG AS IT DOES NOT EXIST
ON BACKSIDE OF BOARD.

13. ALL HOLES TO BE LOCATED WITHIN ±0.003 OF CAD DATABASE.

14. NO VENDOR MARKING OR SERIALIZATION ALLOWED.

15. DELIVER BOARDS BAGGED AS: [x] SINGLES
[] PANEL/ARRAY

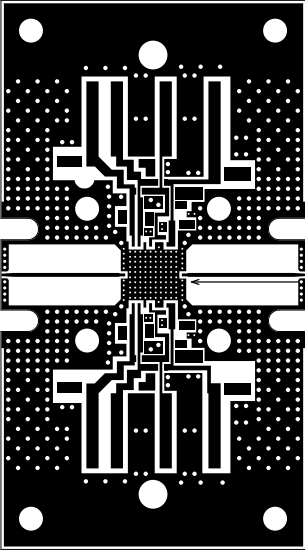
16. 100% ELECTRICAL TEST: [] GERBER EXTRACTED NETLIST
[] IPC-D-356 FORMAT
[x] NO ELECTRICAL TEST

17. STENCIL REQUIREMENTS:
SOLDER PASTE APPLICATION MACHINE: APS (SPR-20)
TOLERANCE TO BE ±0.001in.
SPACING OF CELLS TO BE 1.00in. APART.
MATERIAL: STAINLESS STEEL, 0.005in. THICK
MARK PART: TGA2622-SM V101A, PCB

REVISION HISTORY

ECN	REV	DESCRIPTION	DATE	APPROVAL
ECN-0001324	A	INITIAL RELEASE	7-31-2015	OMARRUFO

7



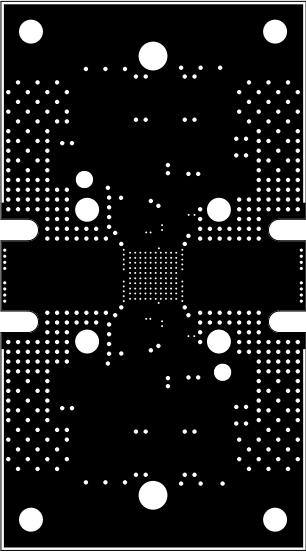
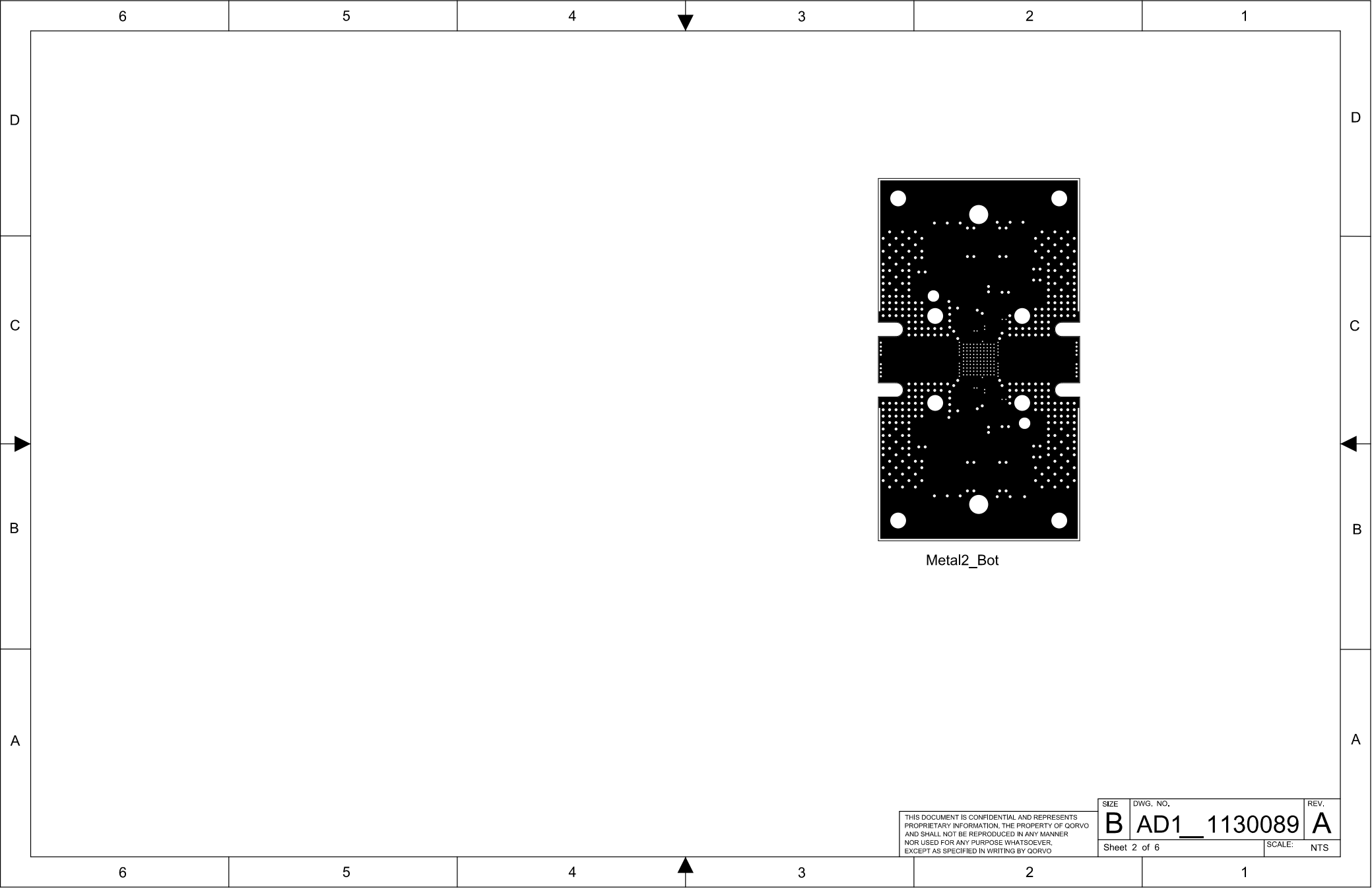
Metal1_Top

THIS DOCUMENT IS CONFIDENTIAL AND REPRESENTS
PROPRIETARY INFORMATION, THE PROPERTY OF QORVO
AND SHALL NOT BE REPRODUCED IN ANY MANNER
NOR USED FOR ANY PURPOSE WHATSOEVER,
EXCEPT AS SPECIFIED IN WRITING BY QORVO

UNLESS OTHERWISE SPECIFIED: DIMENSIONS ARE IN INCHES [mm]	PRODUCT: TGA2622-SM, TGA2624-SM	<div><div>qorvo</div><div>all around you</div></div> <div>500 W Renner RD, Richardson, TX 75080 Phone: 972.994.8200 www.qorvo.com</div>
TOLERANCES ARE: DECIMALS METRIC .XX ± .01 [.XX ± 0.3mm] .XXX ± .005 [.XX ± 0.13mm] .XXXX ± .0010 [.XXX ± .025mm] ANGLES = ±0.5°	APPROVAL AND RELEASE RECORDS MAINTAINED IN PDM	
INTERPRET DRAWING PER ANSI Y14.5-2009	DESIGNER OMARRUFO	04-28-15
THIRD ANGLE PROJECTION DO NOT SCALE DRAWING	ENGR. WGAMIEWSKI	04-28-15
	MFG.	
	MANAGER	
	CAGE CODE	
	PDM CONTROLLED	
	1CVM1	

TITLE: PCB, 1.25X2.25X.011T, TGA2622/2624 7X7 EHS	SIZE DWG. NO. B AD1_1130089	REV. A
Sheet 1 of 6	SCALE: NTS	

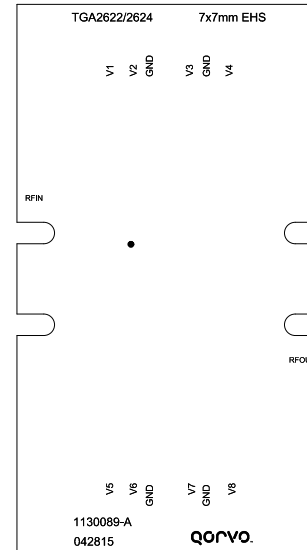
654321



Metal2_Bot

THIS DOCUMENT IS CONFIDENTIAL AND REPRESENTS
PROPRIETARY INFORMATION, THE PROPERTY OF QORVO
AND SHALL NOT BE REPRODUCED IN ANY MANNER
NOR USED FOR ANY PURPOSE WHATSOEVER,
EXCEPT AS SPECIFIED IN WRITING BY QORVO

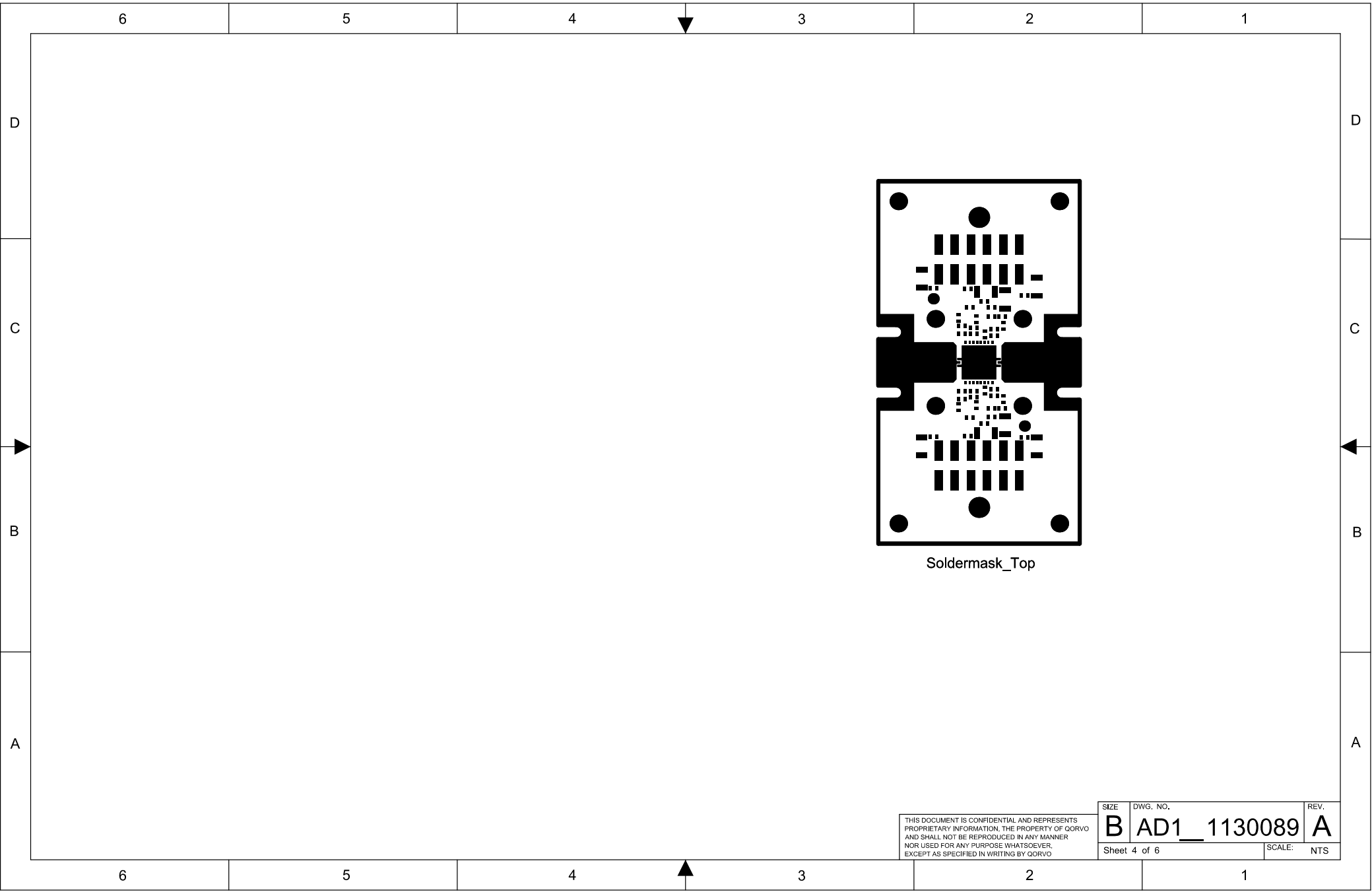
SIZE	DWG. NO.	REV.
B	AD1_1130089	A
Sheet 2 of 6		SCALE: NTS



Silkscreen_Top

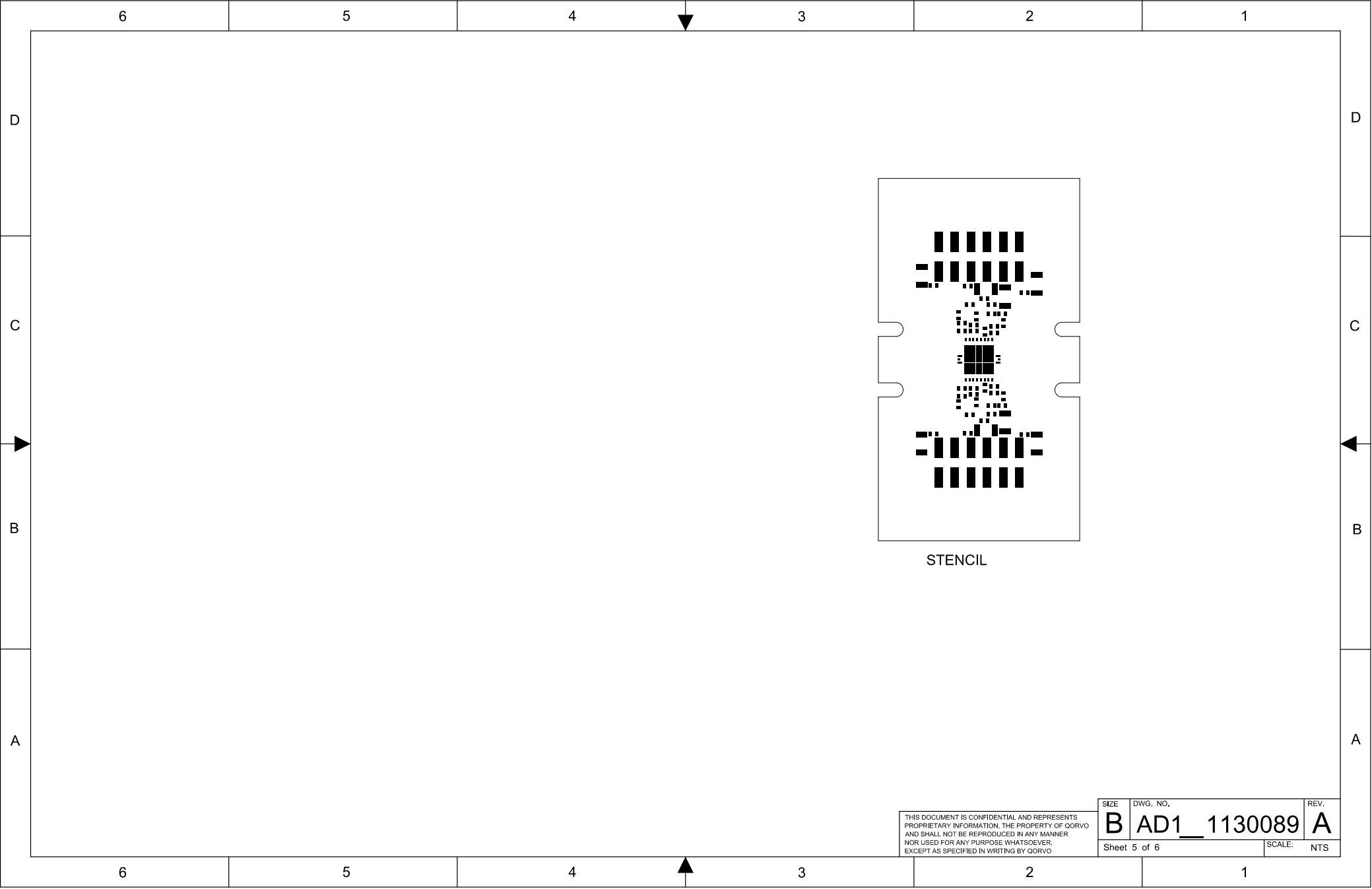
THIS DOCUMENT IS CONFIDENTIAL AND REPRESENTS PROPRIETARY INFORMATION, THE PROPERTY OF QORVO AND SHALL NOT BE REPRODUCED IN ANY MANNER NOR USED FOR ANY PURPOSE WHATSOEVER, EXCEPT AS SPECIFIED IN WRITING BY QORVO

SIZE	DWG. NO.	REV.
B	AD1__1130089	A
Sheet 3 of 6		SCALE: NTS



THIS DOCUMENT IS CONFIDENTIAL AND REPRESENTS
PROPRIETARY INFORMATION, THE PROPERTY OF QORVO
AND SHALL NOT BE REPRODUCED IN ANY MANNER
NOR USED FOR ANY PURPOSE WHATSOEVER,
EXCEPT AS SPECIFIED IN WRITING BY QORVO

SIZE	DWG. NO.	REV.
B	AD1_1130089	A
Sheet 4 of 6		SCALE: NTS



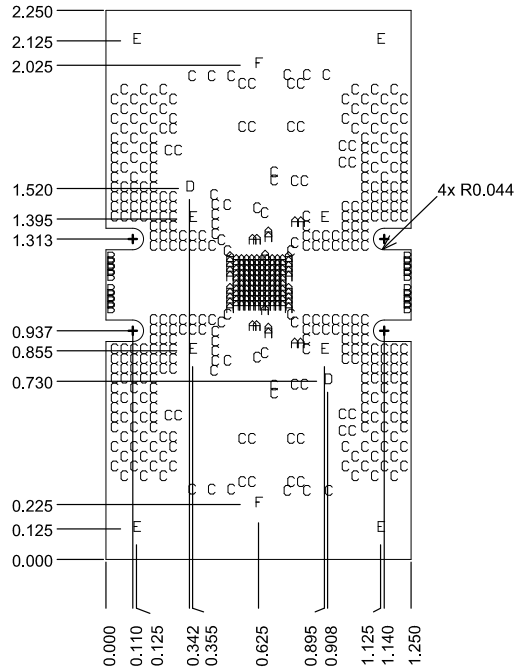
THIS DOCUMENT IS CONFIDENTIAL AND REPRESENTS
PROPRIETARY INFORMATION, THE PROPERTY OF QORVO
AND SHALL NOT BE REPRODUCED IN ANY MANNER
NOR USED FOR ANY PURPOSE WHATSOEVER,
EXCEPT AS SPECIFIED IN WRITING BY QORVO

Layer	Name	Material	Thickness	Constant	Board Layer Stack
1	Silkscreen_Top				
2	Soldermask_Top	Solder Resist	0.40mil	0	
3	Metal1_Top	Copper	0.70mil		
4	Dielectric 1	Rogers 4003C	8.00mil	3.38	
5	Metal2_Bot	Copper	0.70mil		

LAYER STACKUP

Symbol	Hit Count	Finished Hole Size	Plated	Hole Type
A	134	10.00mil (0.254mm)	PTH	Round
B	16	15.00mil (0.381mm)	PTH	Round
C	379	20.00mil (0.508mm)	PTH	Round
D	2	63.00mil (1.600mm)	NPTH	Round
E	8	100.00mil (2.540mm)	PTH	Round
F	2	120.00mil (3.048mm)	PTH	Round
	541 Total			

DRILL CHART



THIS DOCUMENT IS CONFIDENTIAL AND REPRESENTS
PROPRIETARY INFORMATION, THE PROPERTY OF QORVO
AND SHALL NOT BE REPRODUCED IN ANY MANNER
NOR USED FOR ANY PURPOSE WHATSOEVER,
EXCEPT AS SPECIFIED IN WRITING BY QORVO

SIZE	DWG. NO.	REV.
B	AD1_1130089	A
Sheet 6 of 6		SCALE: NTS